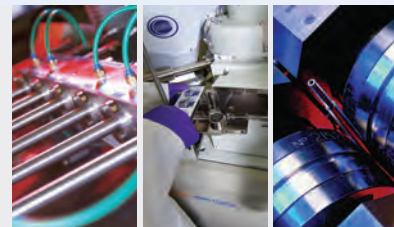




PLYMOUTH MANUFACTURERS' GROUP

YOUR CAREER, YOUR LIFESTYLE, YOUR FUTURE



Front Cover: Plymouth Hoe and Hamoaze
Courtesy of PCC

Inside Cover:
Courtesy of MGB Ltd

INDEX

- P 4** Don't Just Take Our Word For It...
- P 6** Celia Butler, Design Engineer, Sub 10 Systems
- P 8** Steve Ball, Quality Engineer, The Barden Corporation
- P 10** Valerie Hart, Technical Manager, Fine Tubes
- P 12** John Joseph, Operations Director, Burts Potato Chips
- P 14** Stuart Calvert, Managing Director, MGB Engineering
- P 16** Wei Sin Tan, Luminous Efficacy Development Specialist, Plessey
- P 18** Richard Lang, Graduate Civil Engineer, Babcock International
- P 20** Li Yang Zhang, Research & Development Engineer, Plessey



Grow your career, improve your lifestyle

My goal in this publication is to persuade you that not only does Plymouth and its wonderful surroundings within Devon & Cornwall offer arguably the best quality of life available anywhere in the UK, but also a career within an established and flourishing cluster of businesses which, if you are not familiar with the City, may surprise you.

Did you know, for example, that Plymouth has the highest concentration of manufacturing employment of any city south of the Midlands?

As this booklet will show you we have an impressive array of multi-national and indigenous businesses that are frequently looking for the sort of skills that are too often in short supply in this country and indeed internationally too.

Plymouth offers a rare combination of being a large urban center - second largest in the south-west region and the largest port-city on the south coast, together with an outstanding natural environment from moor to sea. Please take a look for yourself and join us soon.

Steve Cardew - Chairman of the Plymouth Manufacturers' Group

DON'T JUST TAKE OUR WORD FOR IT...

#1 COUNTY

DEVON OFFICIALLY ENGLAND'S
BEST COUNTY - COUNTRY LIFE



PLYMOUTH -
BRITAIN'S NEW
GOURMET
HOTSPOT?

- CONDE NAST

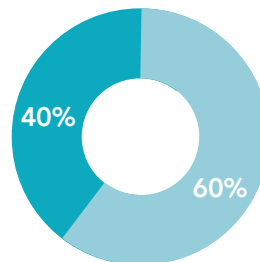
TOP 10

'PLYMOUTH HOE - ONE OF
BRITAIN'S TOP TEN GREEN
SPACES' - HOMEBASE SURVEY 2014




SIX WESTCOUNTRY TOWNS
NAMED IN TOP 101 PLACES
TO LIVE IN BRITAIN

- SUNDAY TIMES



PLYMOUTH IS THE
GREENEST CITY IN
THE UK

 Green space
 Built up



80%

OF PLYMOUTH PRIMARY
AND SECONDARY SCHOOLS
WERE JUDGED AS 'GOOD'
OR 'OUTSTANDING'.



PLYMOUTH
**- BEST PLACE TO
BUY A PROPERTY?**
- THE GUARDIAN

PLYMOUTH UNIVERSITY
IS LISTED AMONG TOP FIFTY
MODERN UNIVERSITIES IN
THE WORLD

- TIMES HIGHER EDUCATION



TOP 20

**ONE OF BRITAIN'S FRIENDLIEST
PLACES TO LIVE** - *THE TELEGRAPH*

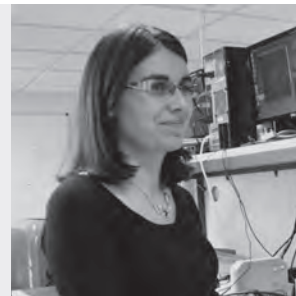


THEATRE ROYAL PLYMOUTH IS THE
LARGEST AND BEST ATTENDED
REGIONAL PRODUCING THEATRE
IN THE UK - *TRIP ADVISOR*



PLYMOUTH IS A
'PEARL'
ON THE
SEASHORE
- THE INDEPENDENT

CELIA BUTLER - *DESIGN ENGINEER: SUB10 SYSTEMS*



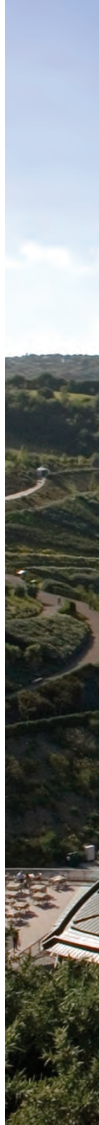
Celia's family originally hail from Birmingham and she was born and brought up in a small village in the Cotswolds. They first had an inkling that Celia was destined for something a bit different when she changed a car tyre rather than that of a bicycle for her Brownie badge.

With a PhD in Physics (Microwave Photonics, Electromagnetic Materials Group), Dr Celia Butler is a Design Engineer with Newton Abbot-based Sub10 Systems. She is responsible for the design; development and testing of the company's E1000e wireless point-to-point link. The award-winning company exports 90 per cent of its products and currently the majority of its sales are to operators in Europe and Russia.

Celia first came to the south-west when she undertook a Masters in Physics with Professional Experience at the University of Exeter in 2007 which included a very successful year's placement at QinetiQ in Farnborough. After graduating she moved to mid-Cornwall to work for Flann Microwave before returning in 2008 to join the Electromagnetic Materials Group to complete a doctoral

degree in Physics specialising in microwave metamaterials. Celia says that when she first took up the post she had no idea how big the manufacturing and, in particular, the photonics sector was in the south Dartmoor and Torbay area. 'I thought they were, at best, little firms that tinkered rather than cutting edge, high-tech, precision firms which is the reality'.

Celia and her fiancé like to use their home in Crediton as a base to explore the moors and coasts; towns and cities. 'I love being out of doors; camping, walking or kayaking'. She is a great fan of sculptor Barbara Hepworth; abstract artist Ben Nicholson and Peter Randall-Page who is best known for creating the 13ft high granite seed that forms the centre piece of The Core building at the Eden Project in Cornwall.



'Home in
Creddon
is a base
to explore
the moors
and coasts;
towns and
cities'.



SUB10
systems.com



'My work
life balance
has been
addressed
for the
better'.





STEVE BALL - QUALITY MANAGER: THE BARDEN CORPORATION

For a long time my wife, my daughter and I travelled to Devon for family visits as my sister lives near Okehampton, our visits became more and more frequent until we finally admitted to ourselves, we had fallen in love with Devon.

I come from an electromechanical background working my way through the ranks via design departments, manufacturing engineering, operations and lean management, then more recently into Production management and onto Quality Management within the Defence Sector.

When we decided to move, the plan was simple, my wife works from home so no real impact for her work and I was to stay where I was and commute until we had moved. I then got to know my new working area and the road network to them, where around us could I work without too much traffic. There were only three possibilities, Barnstaple, Exeter and Plymouth as they were all between 35 and 45 minutes away, I had a few interviews in all three places, didn't get the one's in Barnstaple and removed

myself from one in Exeter. I had a problem, I liked my job in Basingstoke, I liked the company and the position I had made for myself and the company I go to had to tick all my boxes. Then I found Barden Bearings, the more time I spent being interviewed the more I was sure this is where I wanted to work.

My life is very different now to how it was in Basingstoke, Plymouth has all I need, shops, restaurants, the Hoe, etc. I know nearly everyone in my village, I still have a love affair with my surrounding countryside, I have stopped worrying about who my daughter hangs around with and she loves her new school. As for my career, I couldn't be happier, the drive to work is painless, the relaxed approach people have at Barden keeps me sane and my work / life balance has been addressed for the better.

VALERIE HART - TECHNICAL MANAGER: FINE TUBES



The move to Fine Tubes in Plymouth was a great opportunity to change my career direction from large scale heavy steel industry in Scunthorpe to a specialised high end tube manufacturing business.

My role also changed from being a niche technical role in a specialised area to a specialist over a larger range of products, but working with all areas of the business from customer liaison to identifying the technical requirements of the specific operational application to understanding the operational requirements of the manufacturing process and the impacts on the final products requirements. With such a diverse portfolio no two days are the same, which is just how I like it.

I have also found that there is strong technical support available from Plymouth University, with the option of supplementing the facilities within Fine Tubes. Here there is a thriving technological hub in the region and this has enabled fast responses to customer issues without a requirement to take this work out of the region.

But this was not just a change for me, it was a family decision,

and everyone was involved with the move. We all found the local schools to be helpful and able to show a well balanced curriculum but also with extracurricular child care support. There has also been an extended community developed around the school to encourage community participation in particular with Football clubs, walking in the moors and the purpose made cycle paths. This has been very useful to build up a friendly network and find out more about the local facilities on offer.

Moving two people, both with senior jobs was always going to be more of a challenge, but with the two main roads (A30 and A38) through the region we have used this option to find the extra job, but it has taken 12 months, with a couple of changes. It is quite obvious that the overall job market within the area is now improving so the ability to find that extra job has become easier as more vacancies have arisen.



'Relocating to Plymouth has been one of the best things we have done. Great for the family, fantastic views and great people'.



'I can't
think of
anywhere
else I'd be
happier
living and
working'.



BURT'S
BRITISH
POTATO CHIPS
HAND COOKED
WITH CARE



JOHN JOSEPH - *OPERATIONS DIRECTOR: BURTS POTATO CHIPS*

John hails from the big smoke, but having moved to Devon in 2005 to join the artisan chip brand, Burts Potato Chips, is a true Devon convert.

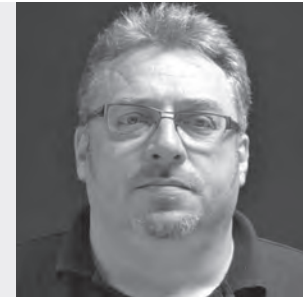
After graduating from Southbank Polytechnic in 1987 with a degree in Food Technology, John moved straight to London to pursue a career in the food industry, an area which he's been passionately involved in ever since. Following a successful stint in the city John relocated to Modbury in 2005, close to Burts' headquarters and factory in Roborough, Plymouth.

John is responsible for overseeing the smooth running of the Burts factory, managing teams of master fryers to ensure quality, consistency and efficiency as well as supporting new product development. Burts offered the chance to be part of a highly innovative, growing company, which was too good to refuse – but to be honest, I wasn't that excited about moving my family here. A huge contrast to London, for me it was goodbye bright lights and hello to the quiet life, but now my views couldn't be more different.

Not only is the region a flourishing business hub, with small start-ups to bigger players in the food manufacturing industry doing extremely well, it's also a fantastic place to bring up a family and become really involved in the local community. The people here make a real difference, everyone's ambitious and hungry for success, without being ruthless or selfish – we all help each other out as we want Plymouth and the surrounding area to be recognised for its entrepreneurial spirit.

Business aside, Devon is a beautiful county to live in. I've got the countryside on my doorstep, great schools for my kids and exciting things to keep me and them entertained on the weekend – as cliché as it sounds, I can't think of anywhere else I'd be happier living and working, and let's face it, London's only a train ride away!"

STUART CALVERT - MANAGING DIRECTOR: MGB ENGINEERING



Stuart is originally from Enfield, North London but having been sponsored by British Rail to study for a degree in civil & structural engineering at the University of Sheffield, work has subsequently taken him all over the country.

It wasn't until the year 2000, whilst working for Bombardier that he became responsible for the Plymouth site which the company had acquired along with much more. Initially, Stuart by-passed Plymouth as he transferred to work for Jacobs Engineering. However, it was while he was there that MGB Signalling was formed in Plymouth, entering a market segment vacated by Bombardier. After a career in large enterprises, Stuart wanted to experience work in a small business and in 2008 he got his chance when he was invited to head-up the newly formed SME which subsequently became MGB Engineering Ltd. The distinctly different proposition appealed to him.

Stuart sensed that the regional business community was much more in tune with trying to support each other. He feels it is a very different dynamic to the inter-company relationships he had been used to within large corporations.

He now lives in the South Hams between Totnes and Dartmouth. "It's got a lot to offer in terms of work/life balance. Even if you have little time you can still go for a walk along the beach for an hour. There are few locations that can rival it for absolute diversity".

Stuart appreciates the blend the region has with a large well equipped city, excellent countryside and a stunning coastline which together meet all of his family's needs. "Plymouth is a strong city with a good theatre and first class restaurants".

Plus from a business perspective the workforce has a quality and a loyalty that's the best he's found in the UK. "Staff are high calibre and well experienced which has made MGB a cost effective centre for manufacturing and design as efficient as anywhere in the world".

'Even if you have little time you can still go for a walk along the beach'.



'I was drawn here because of the quality of life and the combination of coast and moors which makes Plymouth a unique city'.





WEI SIN TAN - *LUMINOUS EFFICACY DEVELOPMENT SPECIALIST: PLESSEY*

Wei Sin Tan's role at Plessey is quite complicated for us mere mortals to get our heads around. He's employed to improve the luminous efficacy of their exciting range of LED products – what that means quite simply to you and I is that his job is to make them brighter.

Wei Sin leads a team of five specialists responsible for the epitaxy or fine layering of gallium nitride wafers on a large area silicon substrate. This is the source of Plessey's competitive advantage in that previously most LED's were grown on a more expensive and smaller sapphire equivalent. Each of these layers can be as little as 1.5 to 2.5 nanometres thick. Bearing in mind that a sheet of paper is about 100,000 nanometres thick that's not a lot!

Wei Sin was born in Malaysia about a 100 miles from Kuala Lumpur or 'KL' as it is often known as. He was educated at Sheffield University and took his first job in Oxford working for the Japanese firm Sharp. Prior to coming to live and work in Plymouth, he was in Dresden in Germany working for Azzurro Semiconductors who share Plessey's interest in what is known as GaN-on-Si technology.

Aside from the appeal of his position at Plessey which Wei Sin describes as 'very challenging', like most people, he was drawn here because of the quality of life and the combination of coast and moors which makes Plymouth a unique city. 'It's a good fit – better than a large city but with all the same amenities'. He and his wife live about 50 metres from the sea, close to the National Marine Aquarium, which they and their three year old daughter frequent most weeks.

"The job is great and there is a very good corporate culture here at Plessey. Part of my plan was to join a growing company and that is exactly what Plessey is".

RICHARD LANG - GRADUATE CIVIL ENGINEER: BABCOCK INTERNATIONAL



Richard Lang is a graduate Civil Engineer at Devonport Royal Dockyard with Babcock International Group, the UK's leading engineering support services organisation.

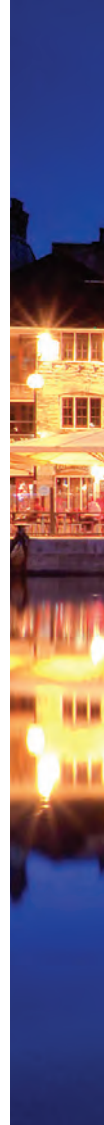
Having completed his master's degree in Civil and Structural Engineering at the University of Bradford, Richard joined Babcock last year and for the first two years he'll be gradually working his way around a variety of different departments and roles, enhancing his knowledge and acquiring a wide range of experiences. This will count towards him achieving his professional status as a Chartered Civil Engineer – a key factor that motivated him to choose Babcock as his employer.

Richard first visited Devon as a boy when he holidayed in Bideford. It must have made a favorable impression on him because fresh after completing his studies he opted to join Babcock in Plymouth. Richard said, "As a graduate it's the job that counts, but living in such a fantastic location is also a bonus". Coming from Yorkshire he quickly found familiarity with there being endless

green countryside just a few miles outside of the City. As a lot of people say, Plymouth bears many of the characteristics of a northern town but it's uniquely placed on the south coast.

Richard recognises that although Babcock is a huge contributor to the local economy, it is but one part of the overall manufacturing and engineering sector in Plymouth which employs between twelve and thirteen thousand locally and serves a diverse range of markets.

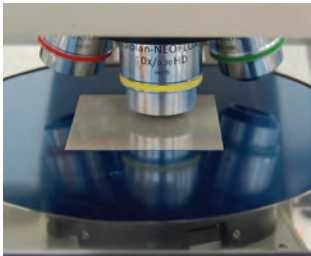
Aside from hiking on the moors and walking along the coastline, Richard is fascinated by the area's rich naval history which stretches back to the times of Drake and Raleigh. "The Barbican is a very nice place to spend some time socialising with fellow graduates over a beer. We've got quite a good community going on here", he says.



‘The Barbican is a very nice place to spend some time socialising with fellow graduates over a beer’.



‘Plymouth
as a city
is quite
beautiful’.





LI YANG ZHANG - *RESEARCH AND DEVELOPMENT ENGINEER: PLESSEY*

Li Yang Zhang is a graduate research & development engineer with Plessey. Originally from Changchun, the capital and largest city of Jilin province, which is located in the northeast of China, she studied for her master's degree in Stockholm, Sweden.

She undertook her PhD in Gallium Nitride at IMEC, formerly the Interuniversity Microelectronics Centre, now a micro- and nanoelectronics research center headquartered in Leuven, Belgium.

Li Yang joined Plessey during 2013 and is a member of Wei Sin's epitaxy team, specialising in LED characterisation. Why choose Plymouth? Simply she says because the job matched her background perfectly and with the added challenge of working with gallium on a silicon substrate it was good for personal growth.

Plessey are clearly a good employer and Plymouth as a city is 'quite beautiful'.

'The people are friendly and I've learnt a lot of new things'.

Li Yang is also a fan of the city's Chinese restaurants and is keen to engage with the Devon and Cornwall Chinese Association, whose mission is to support the needs of the Chinese community living locally and to promote greater understanding and appreciation of the Chinese cultural heritage to the wider public. At close to four thousand, the Chinese community in Plymouth is one of the largest minority ethnic communities in the south west of England.

PLYMOUTH MANUFACTURERS' GROUP

MEMBERS:

ADVANCED MEDICAL SOLUTIONS (PLYMOUTH) LTD
www.admedsol.com

ALDERMANS
www.aldermantooling.co.uk

ALGRAM GROUP LTD
www.algram.net

APPLIED AUTOMATION (UK) LTD
www.appliedautomation.co.uk

ARTEMIS OPTICAL
www.artemis-optical.co.uk

BD
www.bd.com/uk

BABCOCK INT GROUP
www.babcockinternational.com

BANDVULC GROUP
<http://bandvulc.com/>

BARDEN CORPORATION (UK) LTD
www.bardenbearings.co.uk

BIRCH VALLEY PLASTICS LTD
www.birchvalley.co.uk

BOMBARDIER TRANSPORTATION
www.bombardier.com

BURTS POTATO CHIPS LTD
www.burtschips.com

CENTRAX TURBINE COMPONENTS LTD
www.centraxtcl.com

COMPOSITE INTEGRATION LTD
www.composite-integration.co.uk

THE EUROTECH GROUP PLC
www.eurotech-group.co.uk

FAIRFORD ELECTRONICS LTD
www.fairford.co.uk

FINE TUBES LTD
www.finetubes.co.uk

GINSTERS, A DIVISION OF SAMWORTH BROTHERS LTD
www.ginsters.com

HELLERMANNTYTON LTD
www.hellermanntyton.co.uk

HIPPO LEISURE
www.hippoleisure.com

HYMEC AEROSPACE (UK) LTD
www.hymec.net

HYMID MULTI-SHOT LTD
www.hymid.co.uk

KAWASAKI PRECISION MACHINERY (UK) LTD
www.kpm-eu.com

JAMES WALKER MOORFLEX
www.jameswalker.biz

LASER INDUSTRIES LTD
www.laser.co.uk

LATIMER TREND & CO LTD
www.trends.co.uk

LUMINATI WAYCON LTD
www.luminati.co.uk

MAGMA MOULDING LTD
www.magmamoulding.co.uk

MANUPLAS LTD
www.manuplas.co.uk

MEDDINGS THERMALEC LTD
www.meddings.co.uk

MGB ENGINEERING LIMITED
www.mgbl.co.uk

MOULDTech SOLUTIONS
www.mouldtechsolutions.com

M SUBS LTD
www.msubs.com

OAKMOUNT CONTROL SYSTEMS LTD
www.oakmountcs.co.uk

ORCHID PLASTICS LTD
www.orchidplastics.co.uk

PCH MANUFACTURING SERVICES
www.plymouthcommunityhomes.co.uk

PEG PRECISION ENGINEERING
www.peg-precision-engineering.co.uk/

PERMABAN LTD
www.permaban.com

PIPEX PX LIMITED
www.pipexp.com

PLESSEY SEMICONDUCTORS LTD
www.plesseysemiconductors.com

PRINCESS YACHTS INT. PLC
www.princessyachts.com

PTG PRECISION ENGINEERS LTD
www.ptgltd.co.uk

RITTAL CSM LTD.
www.rittal.com/uk-en

SCHNEIDER ELECTRIC
www.schneider-electric.com

SPINNAKER INT. LTD
www.spinnakerinternational.co.uk

SOURCE (MYRNA LTD)
www.cable-accessories.com

SOUTH WEST METAL FINISHING LTD
www.eicgroup.co.uk

SUB10 SYSTEMS LIMITED
www.sub10systems.com

TEIGNBRIDGE PROPELLERS INTERNATIONAL LTD
www.teignbridge.co.uk

THORNBURY MANUFACTURING LTD
www.tml-ltd.com

TIDEFORD ORGANIC FOODS LTD
www.tidefordorganics.com

TIMKEN ILS
www.interlubesystems.co.uk

TOOLTECH LTD
<http://www.tooltech.co.uk/>

UTC AEROSPACE SYSTEMS
<http://utcaerospacesystems.com>

VEXCOLT HOLDINGS LTD
www.vexcolt.com

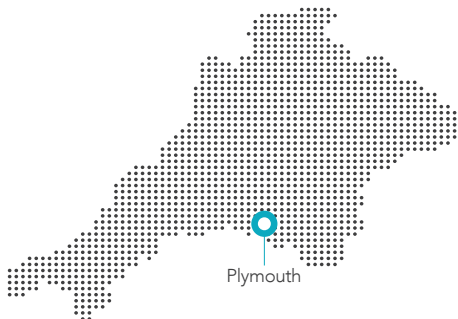
VI-SPRING LTD
www.vispring.co.uk

VORTOK INT LTD
www.vortok.com

WESTAWAY SAUSAGES LTD
www.westawaysausages.com

THE WRIGLEY COMPANY
www.wrigley.com/uk

20 20 PLASTICS LTD
www.2020plastics.co.uk



PLYMOUTH MANUFACTURERS' GROUP

TO FIND OUT MORE, PLEASE CONTACT
STEVE GERRY, SECRETARY

23 Nursery Close, Tamerton Foliot, Plymouth PL5 4QG

T 01752 795034

E stevegerry@dsl.pipex.com

www.mypmg.co.uk

Sponsored by:
Macgregorstaples Associates
Tel: 0333 772 9697
www.macgregorstaples.com

Icons made by Freepik CC BY 3.0


**MACGREGOR
STAPLES**



Plymouth Hoe Terrace
Courtesy of PCC